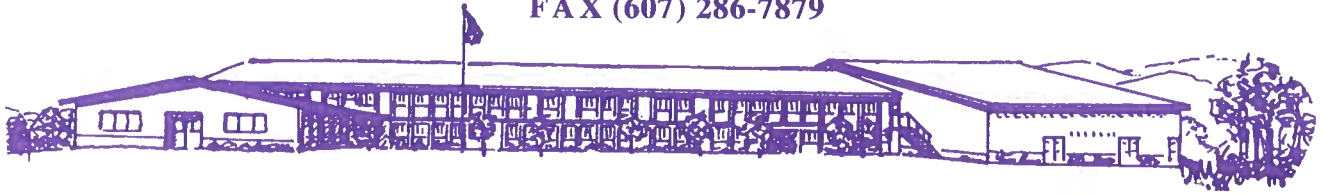


Milford Central School

PO Box 237 • West Main Street
Milford, New York 13807-0237
Telephone (607) 286-3341 or 3349
FAX (607) 286-7879



March 10, 2023

Dear Members of the Milford School Community,

It has never been more important to be focused, aligned and intentional in our work. We are very excited to share the results of our collaborative efforts to develop plans that will help us to continue growing and improving as we always strive for excellence.

Our "Blueprint for Excellence" is the result of planning sessions that were held with our Board of Education, Leadership Team, staff, parents, and community members. We worked with feedback gathered from the community this past fall as we developed a plan that will help us continue to grow and achieve as we strive for excellence in all that we do.

This plan will be the backbone for what we do. It will serve as a roadmap in our efforts to connect with each child and family while enhancing our connections as a school and a community. We're in this work together and look forward to being your teammate in our continued effort to be a model school of excellence.

Thank you for your feedback and support. Your collaboration and teamwork make all the difference in the lives of children and the success of the district.

Sincerely,

A handwritten signature in blue ink, appearing to read 'Kristen Shearer', with a long horizontal flourish extending to the right.

*Kristen Shearer
Superintendent of Schools*

A handwritten signature in blue ink, appearing to read 'Gurpal Singh', with a stylized, cursive script.

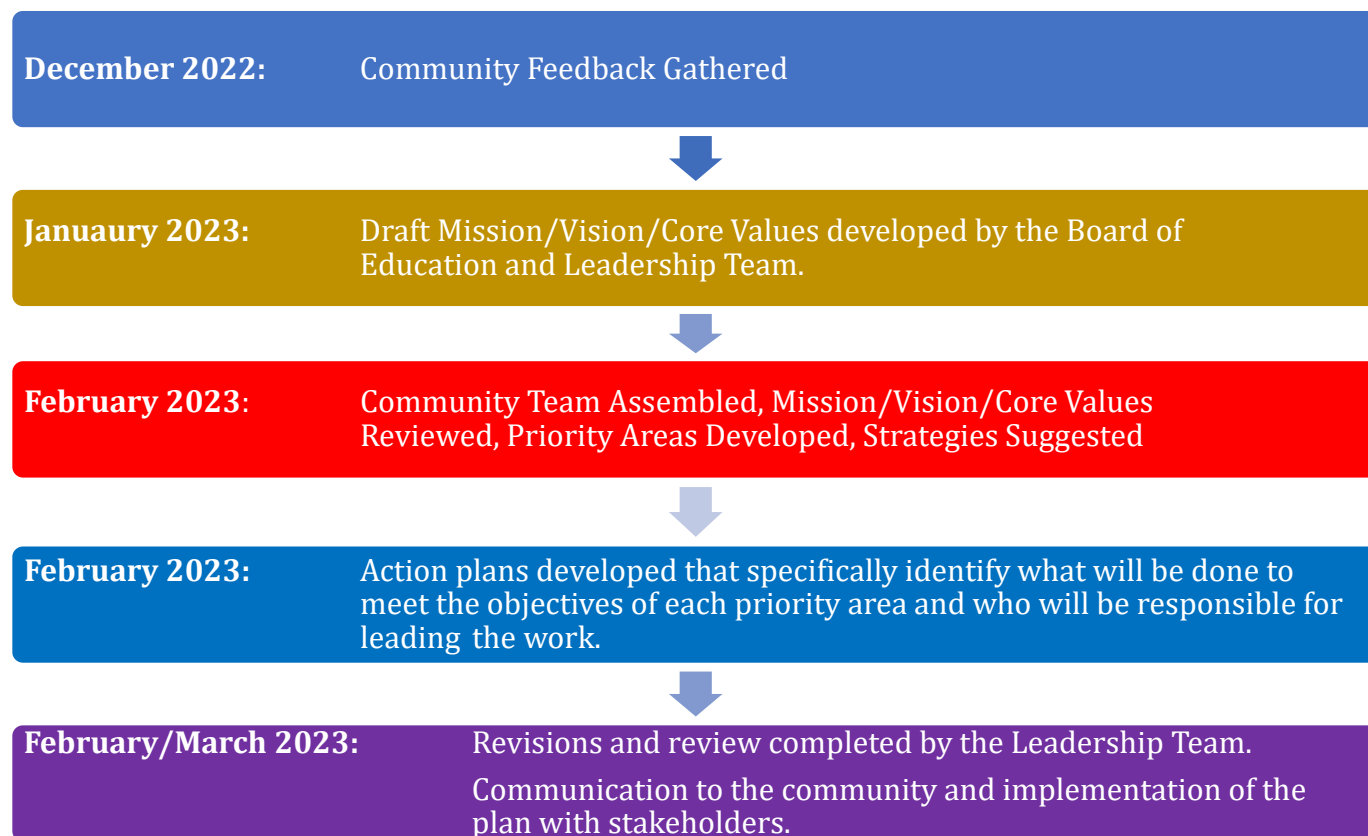
*Gurpal Singh
President, Boards of Education*

Process Introduction and Overview

Blueprint Planning is intended to:

- Involve all members of the school community and reflect their shared perspectives.
- Allow stakeholder representatives to review community feedback to clearly define the district's mission, vision and core values.
- Engage a team in defining the priorities of the district and suggesting action steps to accomplish objectives.
- Facilitate action planning focused on identifying who, when and how the work will get done.
- Provide the district with a road map that is transparent, accountable, and focused.
- Enable the district's efforts to innovate, allocate resources and continuously grow in a coordinated, thoughtful, and aligned manner.
- Be an iterative, evolving, and ongoing process that builds from one year to the next while reflecting emerging needs and changing demands.

Steps in the Milford CSD Planning Process:



Mission

Vision

Core Values

Successful organizations clearly define their purpose, what they need to become to fulfill their purpose and how they operate or behave. These are commonly known as their mission, their vision, and their core values.

Though the Blueprint Planning Process, the school community defined why we exist, what happens in the organization when we are working towards the mission and what behaviors should be evident from individuals and the organization as a whole.

Mission Statement:

MCS prepares students for life beyond school through high quality, diversified and engaging educational experiences.

Vision Statement:

MCS is a district where all children are welcomed, valued and encouraged to care for themselves and others in an environment where they can learn and grow as critical thinkers and responsible global citizens.

Core Values:

We believe that we can achieve our vision and accomplish our mission if in all of our work we focus on clearly defined and consistently demonstrated core values.

To that end, we will:

- Act with integrity.
- Hold ourselves accountable.
- Foster trust with all members of the school community.
- Focus on a commitment to learning for all.
- Demonstrate kindness and respect.
- Be thoughtful and collaborative.
- Engage students and embrace their voice in our decision making.
- Support individual self-care to support both physical and mental health.

